



WINNER SPECIALTY VENUE

2008 National Meetings & Events Industry Awards

# HHT venues | THE MINT

10 Macquarie Street, Sydney



## HISTORY

Constructed between 1811 and 1816 under the direction of Governor Macquarie as the southern wing of the 'Rum Hospital', this site holds great historical significance. Expanded in 1854 to accommodate the first branch of the Royal Mint outside of England, the building has had a diverse range of uses including its most recent transformation in 2004 into the head office of the Historic Houses Trust.

Awarded specialty venue, 2007 and 2008, at the National Meetings & Events Industry Awards and the Greenway Award for conservation at the 2005 NSW Architecture Awards, The Mint now contains innovative and stylish contemporary events spaces suitable for a diverse range of meetings and events.



## AUDITORIUM | BAR | SANDSTONE COURTYARD

Its central city location coupled with the versatility of the spaces available for hire makes The Mint a perfect venue for corporate presentations, webcasting, video conferencing, large meetings, workshops and product launches, as well as banquet receptions, cocktail parties, weddings and other special events. The combination of spaces, including the Auditorium, the purpose-built bar and the use of an expansive sandstone courtyard, gives events a refreshing and unusual indoor/outdoor ambience.

Stylish external motorised cedar louvres allow full control of natural light, making this a stunning venue for that special reveal. Motorised glass panes can be elevated to allow a flow of natural air into the space or, alternatively, the space is fully air-conditioned.



## CONFERENCE ROOM & BOARDROOM

Located within the original Macquarie Street building are the Conference Room and Boardroom. Both rooms have retained many heritage features and are comfortable and elegant spaces for workshops, meetings, presentations, product launches and dinners.

HISTORIC HOUSES TRUST



# HHT venues | THE MINT

	CAPACITY	TIME	FEE <sup>1</sup>	INCLUSIONS
AUDITORIUM   BAR   SANDSTONE COURTYARD	120 THEATRE STYLE 72 CABARET STYLE 30 U-SHAPE 30 HOLLOW SQUARE	8 HOURS <sup>2</sup> 4 HOURS <sup>2</sup>	\$2750 \$2300	<ul style="list-style-type: none"> <li>Event Coordinator &amp; Supervisor</li> <li>AV Technician</li> <li>XGA data projector</li> <li>10 ft x 8 ft motorised screen</li> <li>Lectern + microphone (540mmx845mm)</li> <li>Audio system</li> <li>Tables (6 ft trestle or 6 ft oval) &amp; chairs</li> <li>1 x electronic whiteboard + markers</li> <li>1 x flip chart, paper + markers</li> <li>Green power<sup>4</sup></li> </ul>
	EXHIBITION 110 m <sup>2</sup>			
	100 BANQUET	11AM – 3PM 6PM – MIDNIGHT	\$2750 \$3300	<ul style="list-style-type: none"> <li>Event Coordinator &amp; Supervisor</li> <li>AV Technician</li> <li>XGA data projector</li> <li>10 ft x 8 ft motorised screen</li> <li>Lectern with LCD touch screen + microphone</li> <li>Audio system</li> <li>Tables (6 ft oval) &amp; chairs</li> <li>3 ft drop tables</li> <li>Green power<sup>4</sup></li> </ul>
	250 COCKTAILS	6PM – 9PM 6PM – MIDNIGHT	\$2750 \$3300	<ul style="list-style-type: none"> <li>Event Coordinator &amp; Supervisor</li> <li>AV Technician</li> <li>XGA data projector</li> <li>10 ft x 8 ft motorised screen</li> <li>Lectern with LCD touch screen + microphone</li> <li>6 x 3 ft Drop tables &amp; scattered seating</li> <li>Green power<sup>4</sup></li> </ul>
<b>3. BUMP IN / BUMP OUT RATE CHARGED ON AN HOURLY PRO RATA BASIS</b>				

	CAPACITY	TIME	FEE <sup>1</sup>	INCLUSIONS
CONFERENCE ROOM	34 THEATRE STYLE 18 U-SHAPE	8 HOURS <sup>2</sup> 4 HOURS <sup>2</sup>	\$990 \$825	<ul style="list-style-type: none"> <li>Event Coordinator &amp; Supervisor</li> <li>Conference tables &amp; chairs</li> <li>XGA data projector</li> <li>1 x electronic whiteboard + markers</li> <li>1 x flip chart, paper + markers</li> <li>Green power<sup>4</sup></li> </ul>
	36 BANQUET	11AM – 3PM 6PM – MIDNIGHT	\$990 \$1200	<ul style="list-style-type: none"> <li>Event Coordinator &amp; Supervisor</li> <li>Tables (6 ft oval) &amp; chairs</li> <li>3 ft drop tables</li> <li>Green power<sup>4</sup></li> </ul>
	50 COCKTAILS	6PM – 9PM 6PM – MIDNIGHT	\$990 \$1200	<ul style="list-style-type: none"> <li>Event Coordinator &amp; Supervisor</li> <li>3 ft drop tables&amp; scattered seating</li> <li>Green power<sup>4</sup></li> </ul>

	CAPACITY	TIME	FEE <sup>1</sup>	INCLUSIONS
BOARDROOM	16 BOARDROOM	8 HOURS <sup>2</sup> 4 HOURS <sup>2</sup>	\$990 \$825	<ul style="list-style-type: none"> <li>Event Coordinator &amp; Supervisor</li> <li>Oval Eames board table &amp; leather Eames chairs</li> <li>XGA data projector</li> <li>1 x electronic whiteboard + markers</li> <li>1 x flip chart, paper + markers</li> <li>Green power<sup>4</sup></li> </ul>
	16 BANQUET	11AM – 3PM 6PM – MIDNIGHT	\$990 \$1200	<ul style="list-style-type: none"> <li>Event Coordinator &amp; Supervisor</li> <li>Oval Eames board table &amp; leather Eames chairs</li> <li>Green power<sup>4</sup></li> </ul>

1. ALL PRICES INCLUDE GST, 20% SURCHARGE APPLICABLE ON SUNDAYS AND PUBLIC HOLIDAYS. VENUE HIRE FEES ARE VALID UNTIL 31 MARCH 2011  
 2. BOOKINGS CONCLUDE BY 5PM | 3. UP TO 2 HOURS, THEREAFTER CHARGED AT FULL OR HALF DAY RATE | 4. APPLICATION FORM TO BE COMPLETED

## AUDIOVISUAL

State-of-the-art AV equipment and access to an on-site AV Technician ensure that all AV requirements for your event are made possible. The technician is available for consultation with clients and will advise on complex requirements and compatibility. Additional in-house AV equipment available to clients includes:

ISDN lines (up to 4)	\$275 each <sup>#</sup>	Mac iBook laptop	\$290
ADSL2+ internet	\$110	Portable data projectors	\$275
Wireless internet (per 20 users)	\$110	Monitor 14in	\$120
Analogue lines	\$85 <sup>#</sup>	Courtyard speakers	\$220
Digital telephone hybrid	\$250	Bluetooth mouse	\$25
Conference telephone	\$85 <sup>#</sup>	Presentation tool	\$25 each
Lapel microphones	\$130 each	VHS / DVD player	\$55
Table microphones	\$85 each	Tub chair	\$50 each
Cordless microphones	\$130 each	Electronic whiteboards	\$125 each
Media splitters	\$90 each	Flip charts	\$55 each
Recording CD (MP3)	\$130	Parcon lights & gels	\$650
50in plasma screen	\$440	3 phase power	\$300
Toshiba laptop	\$290		

# Call costs additional  
\* All prices include GST

## GREEN POWER™

The Mint makes available the option for 100% accredited GreenPower™ events across all museum spaces.

By hosting a green event you minimise carbon impact as well as actively promoting a company's focus on addressing the issue of climate change. For further details please contact HHT venues or download the information form from our website.

## CATERING

Food and beverage services are available exclusively from the award-winning Trippas White Catering. The site Catering Manager will work with you to design a catering package that meets your event requirements. Please note that due to conservation requirements to prevent permanent damage to the original sandstone paving, red wine can only be served while guests are seated at tables for a banquet meal and not at cocktail events. **T** 02 8239 2219 **E** [mint@trippaswhite.com.au](mailto:mint@trippaswhite.com.au)

## DECORATION AND STYLING

Decoration and styling services are provided by the multi award winning Decorative Events & Exhibitions. An event stylist will work with you to create a unique feel for your next event. Decorative Events offer an extensive range of event hire, wedding hire and exhibition hire products. From distinctive centrepieces, unique furniture and specialised linen and napery, Decorative Event & Exhibitions catalogue of products is constantly evolving and expanding. Please contact Jada Bennett on **T** 02 8399 2299 or **E** [jada@decorativeevents.com.au](mailto:jada@decorativeevents.com.au) for a tailored proposal. [www.decorativeevents.com](http://www.decorativeevents.com)

## SUPPLIERS

With a selection of unique venues and the ability to host a diverse range of events, we can recommend suppliers who have worked successfully across HHT venues. Whether it be staging, musicians, wedding cars or decoration, we can assist you with your event requirements.

## PARKING

There is no on-site parking at The Mint. Conveniently located parking stations include:

### Secure Parking

131 Macquarie St, Sydney, NSW, 2000 **T** 02 8912 4900. Open until midnight Mon – Fri / 1am Sat / 5pm Sun

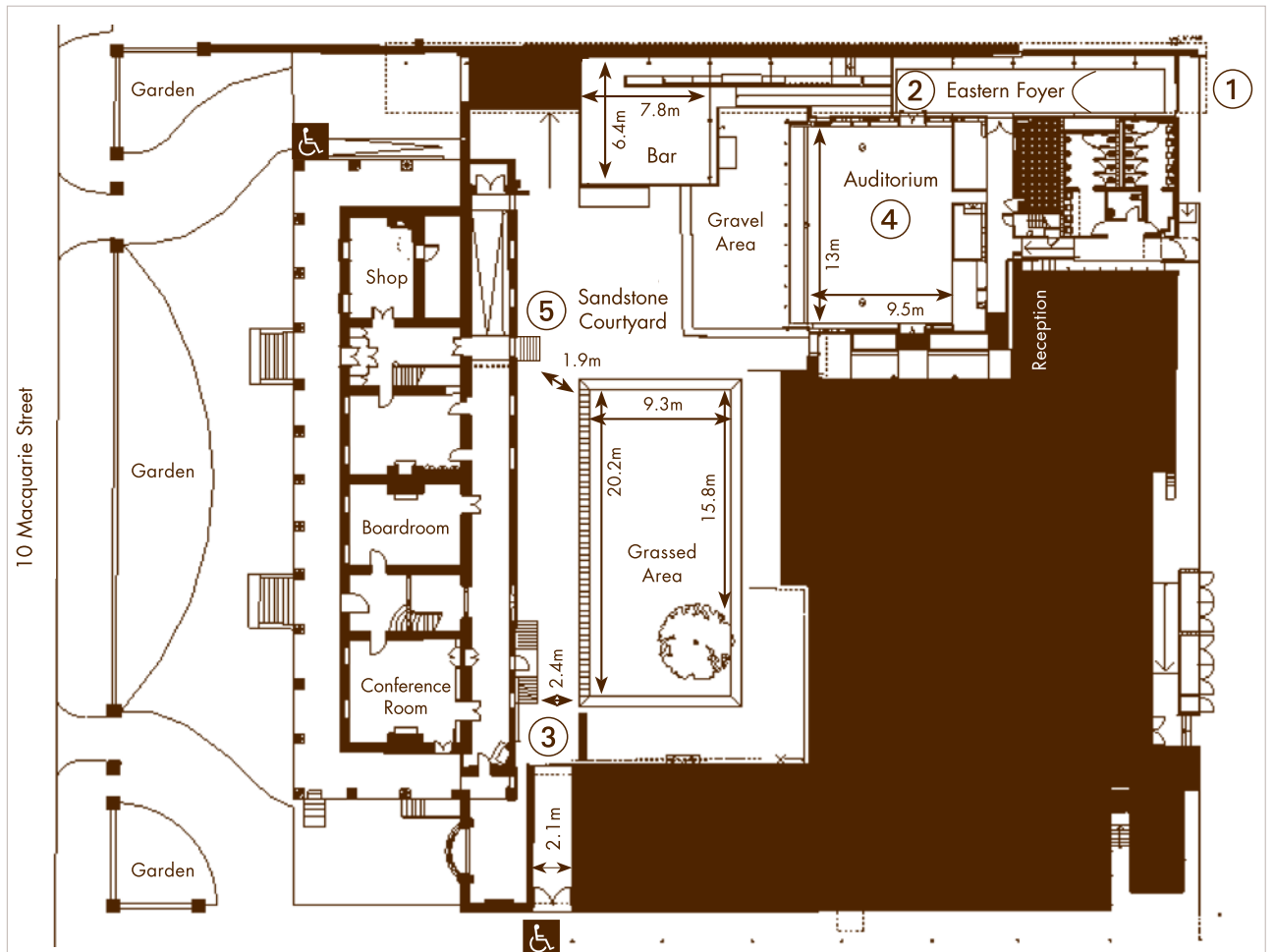
### Metro Parking – Sydney Hospital

8 Hospital Rd, Sydney, NSW, 2000 **T** 02 9223 1166. Open until 9.30pm Mon – Fri / 8pm Sat / 6pm Sun

### Domain Parking – Preferred supplied arrangement for event attendees

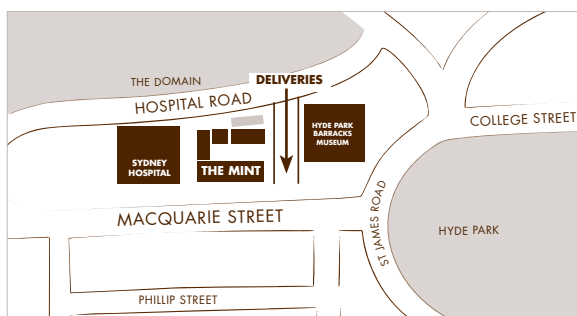
Access via St Mary's Rd, Sydney, NSW, 2000 **T** 02 9232 6944. Open until 9pm Mon – Sat / 6pm Sun

## SITE PLAN



## HYDE PARK BARRACKS MUSEUM

## MAP



- ① Loading dock clearance: 1.8m
- ② Auditorium door clearance: 1.7m
- ③ Archway clearance: 2.4m
- ④ Wave ceiling 6.5m to 2.8m
- ⑤ Power: 1 x 240v, 1 x 3 phase
- ⑥ Bar alcove: 1m x 1.04m x 0.35m (WxHxD)
- ⑦ Bar ceiling 3.45m

## CONTACT

For more information regarding The Mint, or other HHT venues please contact:

**Sales & Marketing Coordinator | HHT venues | Historic Houses Trust**

The Mint, 10 Macquarie Street, Sydney, NSW 2000

**T** +61 2 8239 2288 | **F** +61 2 8239 2400 | **E** venues@hht.net.au | [www.hhtvenues.com.au](http://www.hhtvenues.com.au)