



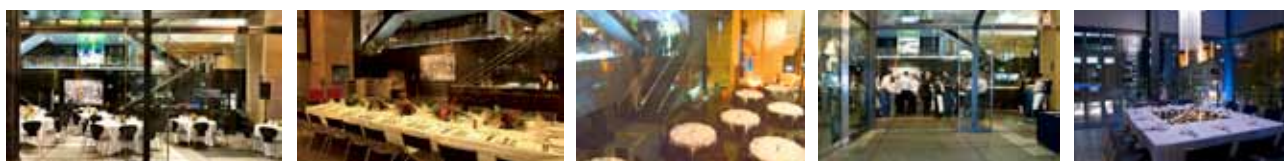
## HISTORY

The Museum of Sydney (MOS) offers everything an event organiser desires. A modern museum built on a historic site – the site of first Government House – the building incorporates the earliest foundations of British colonisation in Australia. In close proximity to Circular Quay, MOS offers the advanced facilities required for a successful event in a stylish and innovative environment.



## AGL THEATRE | THEATRE LOBBY

The new AGL Theatre was launched in March 2008 with new seating, furnishings and audiovisual facilities, and is now suitable for webcasting, video conferencing, results presentations, annual general meetings, conferences and product launches. It seats 126 people in a comfortable tiered theatre setting. Refreshments can be served in the Theatre Lobby prior to, during and after presentations.



## MOS FOYER & LEVEL 2

MOS Foyer and Level 2 incorporate permanent display areas, providing a fascinating backdrop to any event. Up to 250 guests can enjoy cocktails as they circulate freely from one level to another. The themes of the museum resonate throughout its public areas to provide a continuing experience of Sydney's story. The Foyer seats up to 100 for dinner and guests can enjoy pre-dinner drinks on Level 2.

## VIEWING CUBE

An exclusive dining area is available in the Viewing Cube, a glass structure that cantilevers over First Government House Place from the main building. Looking over Phillip Street with views of Circular Quay, this extraordinary area accommodates up to 24 guests for dinner or 40 for cocktails.

	CAPACITY	TIME	FEE <sup>1</sup>	INCLUSIONS
AGL THEATRE	126 TIERED THEATRE	8 HOURS <sup>2</sup>	\$2300	<ul style="list-style-type: none"> <li>Event Coordinator &amp; Supervisor</li> <li>AV Technician</li> <li>XGA data projector</li> <li>12 ft x 9 ft screen</li> <li>Lectern &amp; microphone</li> <li>Audio system</li> <li>Panel table + chairs</li> <li>Green power<sup>4</sup></li> </ul>
		4 HOURS <sup>2</sup>	\$1700	
<b>3 BUMP IN / BUMP OUT RATE CHARGED ON AN HOURLY PRO RATA BASIS</b>				
	CAPACITY	TIME	FEE <sup>1</sup>	INCLUSIONS
LEVEL 2	126 COCKTAIL	6PM – 9PM	\$1700	<ul style="list-style-type: none"> <li>Event Coordinator &amp; Supervisor</li> <li>3 x 3 ft drop tables</li> <li>10 x cocktail lounges</li> <li>1 x cocktail table</li> <li>5 x stools</li> <li>Green power<sup>4</sup></li> </ul>
	CAPACITY	TIME	FEE <sup>1</sup>	INCLUSIONS
MOS FOYER & LEVEL 2	52 BANQUET (long) 100 BANQUET (round)	6.30PM – 11.30PM	\$2100 <sup>5</sup>	<ul style="list-style-type: none"> <li>Event Coordinator &amp; Supervisor</li> <li>Tables (6 ft oval)</li> <li>3 x 3 ft drop tables</li> <li>Parcan lighting &amp; gels</li> <li>Green power<sup>4</sup></li> </ul>
	250 COCKTAILS (Up to a maximum 4hr service period)	6PM – 9PM	\$1700	
	CAPACITY	TIME	FEE <sup>1</sup>	INCLUSIONS
VIEWING CUBE	24 BANQUET 40 COCKTAIL	6.30PM – 11.30PM 6PM – 9PM	\$1300 \$950	<ul style="list-style-type: none"> <li>Event Coordinator &amp; Supervisor</li> <li>4 x 6 ft trestles</li> <li>Green power<sup>4</sup></li> </ul>
	CAPACITY	TIME	FEE <sup>1</sup>	INCLUSIONS
LEVEL 3	EXHIBITION VIEWING	1.5 HOURS	\$330	<ul style="list-style-type: none"> <li>Museum representation</li> </ul>

1. ALL PRICES INCLUDE GST, 20% SURCHARGE APPLICABLE ON SUNDAYS AND PUBLIC HOLIDAYS. VENUE HIRE FEES ARE VALID UNTIL 31 MARCH 2012
2. BOOKINGS CONCLUDE BY 5PM
3. UP TO 2 HOURS, THERE AFTER CHARGED AT FULL OR HALF DAY RATE
4. APPLICATION FORM TO BE COMPLETED
5. AN ADDITIONAL CHARGE FOR CHAIRS APPLIES FOR ALL EVENTS OVER 80 PEOPLE

## AUDIOVISUAL

State-of-the-art AV equipment and access to an on-site AV Technician ensure that all AV requirements for your event are made possible. The technician is available for consultation with clients and will advise on complex requirements and compatibility. Additional in-house AV equipment made available to clients includes:

ISDN lines (up to 4)	\$300 each <sup>#</sup>	Mac iBook laptop	\$290
ADSL2+ internet	\$110	Monitor 14in	\$120
Wireless internet (per 20 users)	\$110	Data projector	\$275
Analogue lines	\$85 <sup>#</sup>	Portable PA	\$660
Digital telephone hybrid	\$275	Data projector + screen (foyer)	\$800
Conference telephone	\$85 <sup>#</sup>	Blue tooth mouse	\$25
Lapel microphones	\$130 each	Laser pointers	\$25 each
Table microphones	\$85 each	VHS / DVD player	\$55
Cordless microphones	\$130 each	35mm slide projector	\$35 each
Media splitters	\$110 each	Electronic whiteboard	\$125
Recording CD (MP3)	\$130	Flip charts	\$55 each
50in plasma screen	\$440	3 phase power	\$300
Toshiba laptop	\$290		

\* All prices include GST  
# Call costs additional

## GREEN POWER™

Museum of Sydney makes available the option for 100% accredited GreenPower™ events across all museum spaces. By hosting a green event you minimise carbon impact as well as actively promoting a company's focus on addressing the issue of climate change. For further details please contact HHT venues or download the information form from our website.

## CATERING

Food and beverage services are available exclusively by Toast Food, Boardroom Caterer of the year 2009 – RCA NSW. The site Catering Manager will work with you to design a catering package that meets your event requirements.

T 02 9241 7300 | E [events@toastfood.com.au](mailto:events@toastfood.com.au)

## SUPPLIERS

With a selection of unique venues and the ability to host a diverse range of events, we can recommend suppliers who have worked successfully across HHT venues. Whether it be staging, musicians, wedding cars or decoration, we can assist you with your event requirements.

## PARKING

There is no on-site parking at the Museum of Sydney. Conveniently located parking stations include:

### Secure Parking

Level 4, 2 Chifley Sq, Sydney, NSW 2000 T 02 9231 4294. Open 24 hours Mon – Fri / 6.30pm Sat / closed Sun

### Hotel Intercontinental Parking

Cnr Bridge & Phillip Sts, Sydney, NSW 2000 T 02 9253 9000. Open 6am – 11pm Sun – Thurs / 6am – midnight Fri & Sat

### Sydney Opera House Car Park

2 Macquarie St, Sydney, NSW 2000 T 02 9247 7599. Open 6.30am – 1am 7 days

## CONTACT

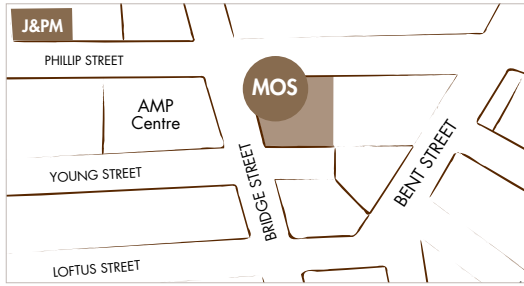
For more information regarding the Museum of Sydney, or other HHT venues please contact:

Sales & Marketing Coordinator | HHT venues | Historic Houses Trust

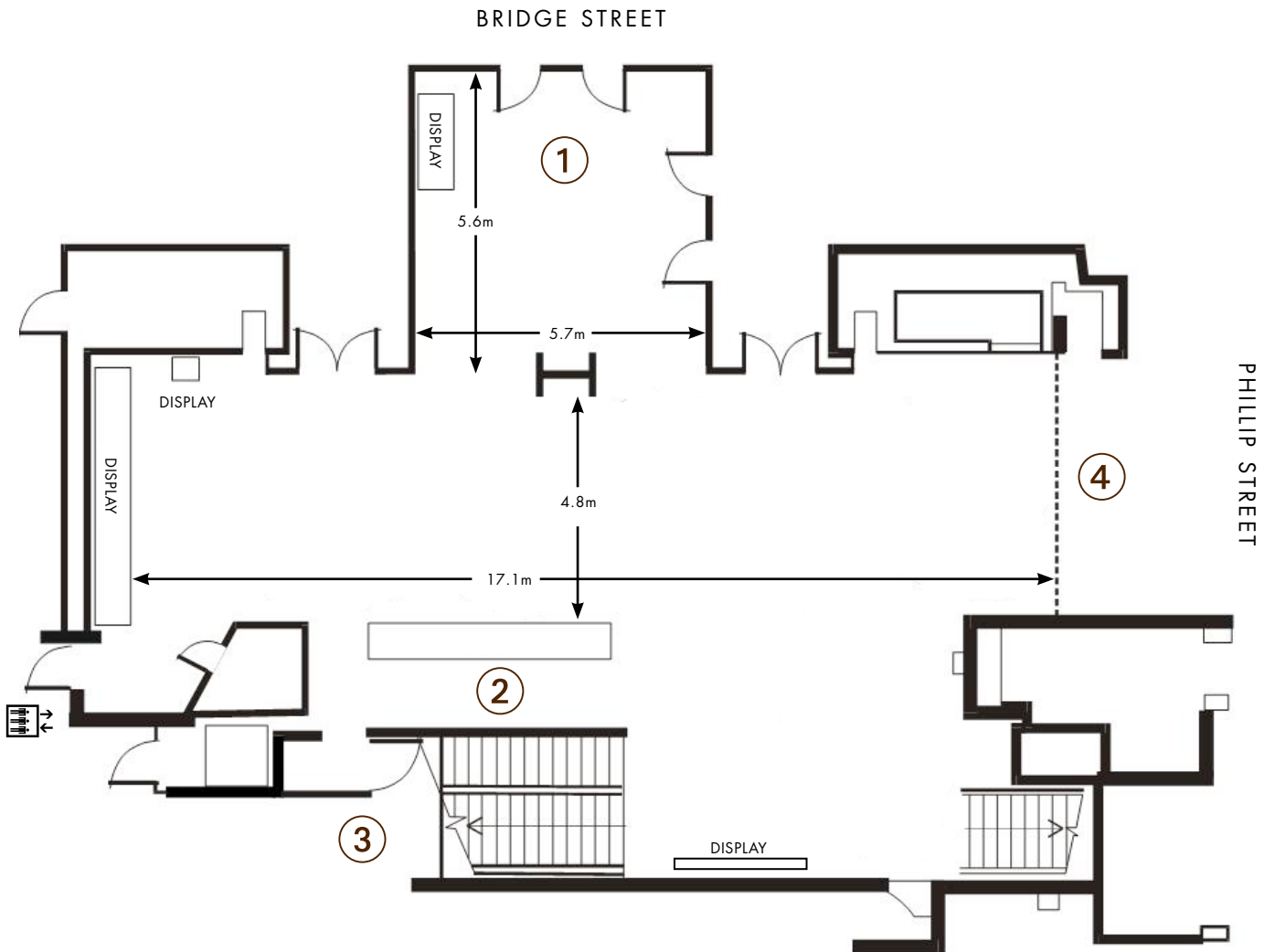
The Mint, 10 Macquarie Street, Sydney, NSW 2000

T +61 2 8239 2288 | F +61 2 8239 2400 | E [venues@hht.net.au](mailto:venues@hht.net.au) | [www.hhtvenues.com.au](http://www.hhtvenues.com.au)

## MAP

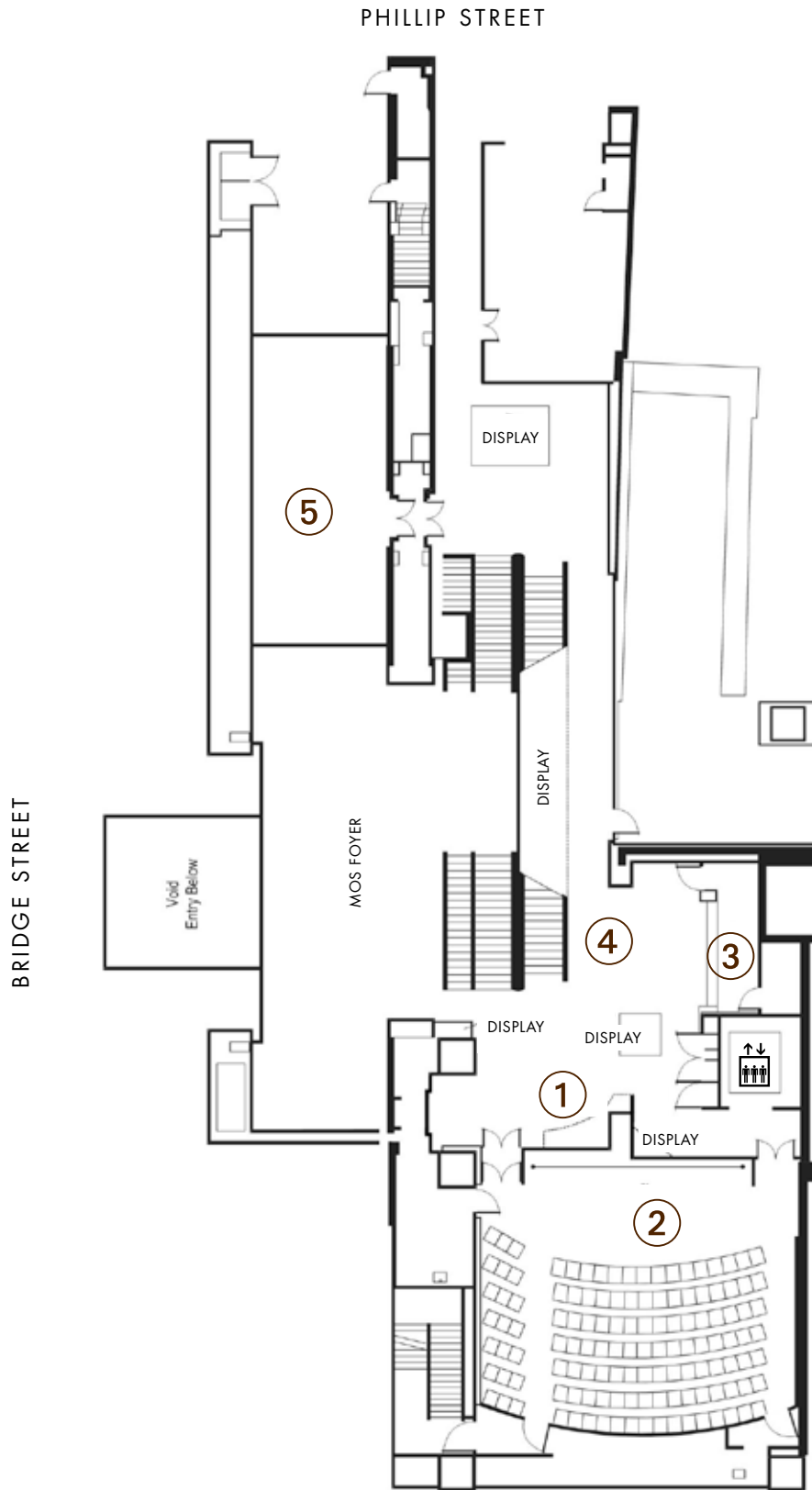


## SITE PLAN - MOS FOYER



- ① Main entry
- ② Reception
- ③ Cloak room
- ④ Operable wall

## SITE PLAN – MOS LEVEL 2



- ① Trade wall
- ② AGL Theatre
- ③ Bar
- ④ Theatre Lobby
- ⑤ Visitor's Centre