

HHT venues | JUSTICE & POLICE MUSEUM

Cnr Albert and Phillip Streets, Circular Quay, Sydney



HISTORY

Located at the bustling transport hub of Circular Quay, this majestic sandstone complex was originally the Water Police Court (1856), then Water Police Station (1858) and Police Court (1886). The Barnet and Blacket courtrooms and an adjoining antechamber, the Yellow Room, are ideal for presentations, workshops, product launches, business luncheons, dinners and cocktail events.

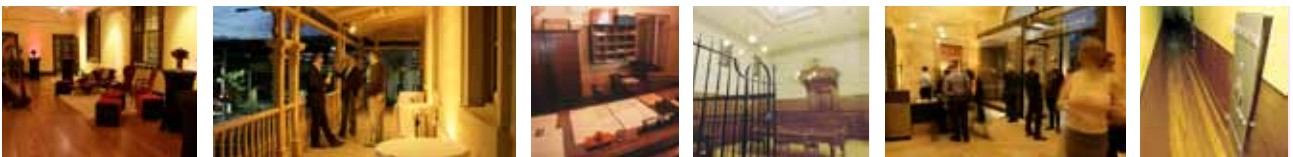


BLACKET COURT | SANDSTONE VERANDAH

The museum's dedicated event space, the Blacket Court, has undergone an extensive refurbishment to incorporate state-of-the-art audiovisual equipment including webcasting, video conferencing, data projection, an integrated audio system and high-speed wireless internet. With an innovative lighting system for both day and evening events, this space is now ideal for conferences, workshops, product launches, luncheons, themed dinners and cocktail parties. Featuring a magistrate's bench and canopy, high ceilings, excellent acoustics and the adjoining Yellow Room antechamber, which can be used as a pre-function space or breakout room, the space lends itself to a multitude of uses.

YELLOW ROOM | SANDSTONE VERANDAH

The Yellow Room, featuring natural light and high ceilings, is the ideal space for small meetings, intimate luncheons, dinners and cocktail parties. With stand-alone audiovisual equipment including high-speed internet and accompanied by a covered sandstone verandah overlooking Circular Quay, the Yellow Room is perfect for small to medium-sized events.



CHARGE ROOM | BARNET COURT

A unique option made available to clients is to hire the charge room and exhibition cells. Guests are welcomed at the charge room desk and then escorted through to view the authentic 1858 holding cell, police history cell, forensic science cell and bushranger cell. Guests will then move directly to their event space or to the sandstone verandah for drinks.

The authentic Barnet Court, including a magistrate's bench, reporters/jury box, witness stand and prisoners dock, is ideal for mock trials and is a unique space for small dinners, presentations and film and photography shoots.

HHT venues | JUSTICE & POLICE MUSEUM

| | CAPACITY | TIME | FEE ¹ | INCLUSIONS |
|--|---|--|------------------|---|
| BLACKET COURT YELLOW ROOM SANDSTONE VERANDAH | 120 THEATRE STYLE 64 CABARET STYLE 30 U-SHAPE 20 BOARDROOM | 8 HOURS ² 4 HOURS ² | \$1800 \$1450 | <ul style="list-style-type: none"> Event Coordinator & Supervisor AV Technician XGA data projector 10 ft x 8 ft motorised screen Lectern + microphone ERCO lighting system 1 x electronic whiteboard + markers 1 x flip chart, paper + markers Tables (6 ft trestle or 6 ft oval) & chairs 6 x 3 ft drop tables |
| | EXHIBITION 107m ² | | | |
| | 100 BANQUET | 11AM – 3PM 6.30PM – MIDNIGHT | \$1800 \$2100 | <ul style="list-style-type: none"> Event Coordinator & Supervisor AV Technician XGA data projector 10 ft x 8 ft motorised screen Lectern + microphone Tables (6 ft trestle or 6 ft oval) & chairs 6 x 3 ft drop tables |
| | 160 COCKTAILS | 6PM – 9PM 6PM – MIDNIGHT | \$1800 \$2300 | <ul style="list-style-type: none"> Event Coordinator & Supervisor AV Technician XGA data projector 10 ft x 8 ft motorised screen Lectern + microphone Tables (6 ft trestle or 6 ft oval) & chairs 6 x 3 ft drop tables |
| 3 BUMP IN / BUMP OUT RATE CHARGED ON AN HOURLY PRO RATA BASIS | | | | |
| YELLOW ROOM SANDSTONE VERANDAH | 40 THEATRE STYLE 20 BOARDROOM | 8 HOURS ² 4 HOURS ² | \$990 \$825 | <ul style="list-style-type: none"> Event Coordinator & Supervisor Lectern 1 x electronic whiteboard + markers 1 x flip chart, paper + markers Tables (6 ft trestle) & chairs 6 x 3 ft drop tables |
| | 40 BANQUET (ROUND) 32 BANQUET (LONG) | 11AM – 3PM 6.30PM – MIDNIGHT | \$1200 \$1600 | <ul style="list-style-type: none"> Event Coordinator & Supervisor Lectern Portable PA system & microphone Tables & chairs 6 x 3 ft drop tables |
| | 90 COCKTAILS | 6PM – 9PM 6PM – MIDNIGHT | \$1200 \$1600 | <ul style="list-style-type: none"> Event Coordinator & Supervisor Lectern Portable PA system & microphone Tables & chairs 6 x 3 ft drop tables |
| BARNET COURT SANDSTONE VERANDAH | 16 BANQUET | 6.30PM – MIDNIGHT | \$1450 | <ul style="list-style-type: none"> Event Coordinator Table & chairs 3 ft drop tables |
| CHARGE ROOM EXHIBITION CELLS | | 1ST HOUR OF EVENT | \$380 | |

1. ALL PRICES INCLUDE GST, 20% SURCHARGE APPLICABLE ON SUNDAYS AND PUBLIC HOLIDAYS VENUE HIRE FEES ARE VALID UNTIL 31 MARCH 2012
2. BOOKINGS CONCLUDE BY 5PM | 3. UP TO 2 HOURS, THERE AFTER CHARGED AT FULL OR HALF DAY RATE

HHT venues | JUSTICE & POLICE MUSEUM

AUDIOVISUAL

State-of-the-art AV equipment and access to an on-site AV Technician ensure that all AV requirements for your event are made possible. The technician is available for consultation with clients and will advise on complex requirements and compatibility. Additional in-house AV equipment made available to clients includes:

| | | | |
|----------------------------------|--------------------|--|---|
| ISDN lines (up to 4) | \$300 [#] | Mac iBook laptop | \$290 |
| ADSL2+ internet | \$110 | Portable data projectors | \$275 |
| Wireless internet (per 20 users) | \$110 | Portable PA & mic | \$175 |
| Analogue lines | \$85 [#] | Monitor 14in | \$120 |
| Digital telephone hybrid | \$275 | Bluetooth mouse | \$25 |
| Conference telephone | \$85 [#] | Laser pointers | \$25 each |
| Lapel microphones | \$130 each | VHS / DVD player | \$55 |
| Table microphones | \$85 each | Electronic whiteboard | \$125 |
| Cordless microphones | \$130 each | Flip charts | \$55 each |
| Media splitters | \$90 each | Tub chairs or ottomans | \$50 each |
| Recording CD (MP3) | \$130 | Dance floor (up to 15ft ²) | \$150 |
| 50in plasma screen | \$440 | Parcan lights + gels | \$450 |
| Toshiba laptop | \$290 | 3 phase power | \$300 |
| | | | *All prices include GST #Call costs additional |

CATERING

Food and beverage services are available exclusively by the award-winning Avocado Group. The Catering Manager will work with you to design a catering package that meets your event requirements. Please note that due to conservation requirements to prevent permanent damage to the original sandstone paving, red wine can only be served while guests are seated at tables for a banquet meal and not at cocktail events.

Avocado Group

T 02 9264 1300 | E avocado@avocadogroup.com.au

SUPPLIERS

With a selection of unique venues and the ability to host a diverse range of events, we can recommend suppliers who have worked successfully across HHT venues. Whether it be staging, musicians, wedding cars or decoration, we can assist you with your event requirements.

PARKING

There is no on-site parking at the Justice & Police Museum. Conveniently located parking stations include:

Secure Parking Sir Stamford

93 Macquarie St, Sydney, NSW 2000 T 02 9252 4286. Open 6am – midnight 7 days

Hotel Intercontinental Parking

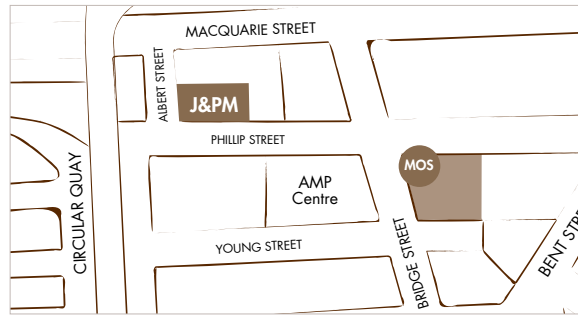
Cnr Bridge & Phillip Sts, Sydney, NSW 2000 T 02 9253 9000. Open 6am – 11pm Sun – Thurs / 6am – 12am Fri & Sat

Sydney Opera House Car Park

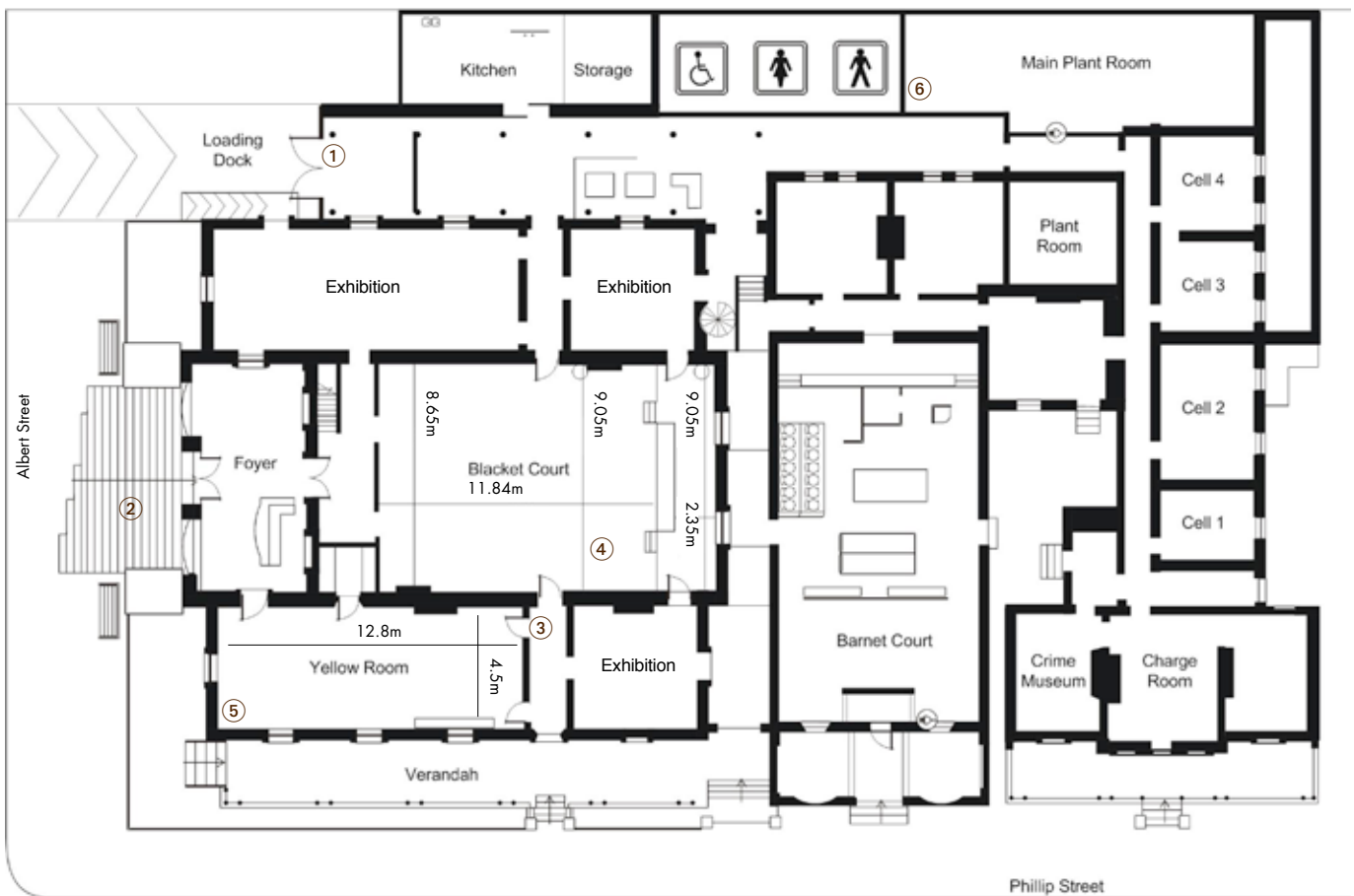
2 Macquarie St, Sydney, NSW 2000 T 02 9247 7599. Open 6.30am – 1am 7 days

HHT venues | JUSTICE & POLICE MUSEUM

MAP



SITE PLAN



- ① Loading dock clearance: 3.1m
- ② Entry foyer clearance: 1.7m x 2.4m
- ③ Door clearance: 880mm x 2m
- ④ Ceiling height blacket court: 6.3m
- ⑤ Ceiling height Yellow Room: 3.5m
- ⑥ Power: 8 x 240v, 1 x 3 phase

CONTACT

For more information regarding the Justice & Police Museum or other HHT venues please contact:

Sales & Marketing Coordinator | HHT venues | Historic Houses Trust

The Mint, 10 Macquarie Street, Sydney, NSW 2000

T +61 2 8239 2288 | F +61 2 8239 2400 | E venues@hht.net.au | www.hhtvenues.com.au

HISTORIC HOUSES TRUST

