



## HISTORY

With its wide sandstone verandahs, historic interiors and glorious 1830s garden, Elizabeth Farm provides a marvellous setting for business events, cocktail parties, dinners and wedding ceremonies. Elizabeth Farm is Australia's oldest existing dwelling. It was the home of John and Elizabeth Macarthur, pioneers of the Australian wool industry. The house is furnished with reproduction furniture, giving guests the opportunity to utilise the entire space.



## DINING ROOM & DRAWING ROOM

The dining and drawing rooms are perfect for elegant, intimate dinner parties. Pre-dinner drinks can be served on the sandstone verandah and the lawns. The original fireplaces are operational and the rooms accommodate up to 20 guests.

## COLONIAL KITCHEN

The colonial kitchen with its cast-iron kitchen range provides a unique venue for themed functions for corporate and incentive business use.



## OAK TREE COURTYARD

The brick-paved oak tree courtyard has the elegant house as its backdrop and is suitable for cocktails for up to 100 guests.

## GARDEN & GROUNDS

A grand 19th-century carriageway creates a dramatic entrance for special events. Surrounded by glorious gardens and grounds, this picturesque historic site provides a unique setting for wedding ceremonies, cocktail parties and lavish dinners.

# HHT venues | ELIZABETH FARM

|                                       | CAPACITY  | TIME                          | FEE <sup>1</sup>    | INCLUSIONS  |
|---------------------------------------|---|-------------------------------|---------------------|---|
| <b>DINING ROOM &amp; DRAWING ROOM</b> | 20 BANQUET<br>40 COCKTAILS                        | 5.30PM – 10.30PM              | \$1200 <sup>3</sup> | <ul style="list-style-type: none"> <li>• Event Coordinator &amp; Supervisor</li> <li>• Table</li> <li>• Chairs</li> </ul>   |
| <b>OAK TREE COURTYARD</b>             | 100 COCKTAILS                                     | 5.30PM – 10.30PM              | \$1200              | <ul style="list-style-type: none"> <li>• Event Coordinator &amp; Supervisor</li> <li>• Table</li> <li>• Chairs</li> </ul>   |
| <b>GARDENS &amp; GROUNDS</b>          | 70 BANQUET<br>100 COCKTAILS<br>(marquee required) | 5 HOURS                       | \$1200              | <ul style="list-style-type: none"> <li>• Event Coordinator &amp; Supervisor</li> <li>• Existing fixed lighting</li> <li>• Power</li> </ul>  |
|                                       | 80 WEDDING CEREMONY/<br>PHOTOGRAPHY               | 4 HOURS                       | \$900 <sup>2</sup>  | <ul style="list-style-type: none"> <li>• Event Coordinator &amp; Supervisor</li> <li>• 20 x white chairs</li> <li>• 2 x antique chairs</li> <li>• 1 x antique cocktail table</li> </ul> |
| <b>WEDDING PHOTOGRAPHY</b>            | HOUSE & GARDENS                                   | 1 HOUR<br>between 9am and 5pm | \$330               | <ul style="list-style-type: none"> <li>• Event Coordinator &amp; Supervisor</li> </ul>  |
| <b>TEAROOMS</b>                       | 40 BANQUET<br>80 COCKTAILS                        | 5.30PM – 10.30PM              | \$1600 <sup>3</sup> | <ul style="list-style-type: none"> <li>• Event Coordinator &amp; Supervisor</li> <li>• Table</li> <li>• Chairs</li> </ul>   |

1. ALL PRICES INCLUDE GST, 20% SURCHARGE APPLICABLE ON SUNDAYS AND PUBLIC HOLIDAYS. VENUE HIRE FEES ARE VALID UNTIL 31 MARCH 2012
2. CHARGED ON AN HOURLY PRO RATA BASIS WHEN BOOKED IN CONJUNCTION WITH RECEPTION
3. WINTER RATES ARE AVAILABLE FOR WEDDINGS HELD BETWEEN JUNE – AUGUST

## CATERING

Food and beverage services are provided by the award-winning Avocado Group. The Catering Manager will work with you to design a catering package that meets your event requirements. Please note that due to conservation requirements to prevent permanent damage to the original sandstone paving, red wine can only be served while guests are seated at tables for a banquet meal and not at cocktail events.  
**T** 02 9264 1300 | **E** [avocado@avocadogroup.com.au](mailto:avocado@avocadogroup.com.au)

## SUPPLIERS

With a selection of unique venues and the ability to host a diverse range of events, we can recommend suppliers who have worked successfully across HHT venues. Whether it be staging, musicians, wedding cars or decoration, we can assist you with your event requirements.

## MUSIC

To complement the surroundings of the property clients have engaged string groups to play background music. We can recommend a selection of string groups and musicians who have worked successfully across HHT venues. Due to the Environmental Protection Authority noise guidelines, amplification is permitted for vocals only. No DJs or amplified bands are permitted.

## MARQUEE HIRE

Marquee structures are provided by our preferred suppliers. Please contact our contractors directly and they will design a marquee that meets your event requirements. Marquees range in price from \$7000 to \$22,000.

### Class Occasion Hire

**T** 02 9674 5900 | **E** [admin@classoccasionhire.com.au](mailto:admin@classoccasionhire.com.au) | **W** [www.classoccasion.com.au](http://www.classoccasion.com.au)

### Pages Event Hire

**T** 02 9533 9400 | **E** [pages@tig.com.au](mailto:pages@tig.com.au) | **W** [www.pageseventhire.com.au](http://www.pageseventhire.com.au)

### White Umbrella

**T** 02 9332 2087 | **E** [libby@whiteumbrella.com.au](mailto:libby@whiteumbrella.com.au) | **W** [www.whiteumbrella.com.au](http://www.whiteumbrella.com.au)

## PARKING

There is no secure on-site parking at Elizabeth Farm. Conveniently located street parking is available.

## MAP



## CONTACT

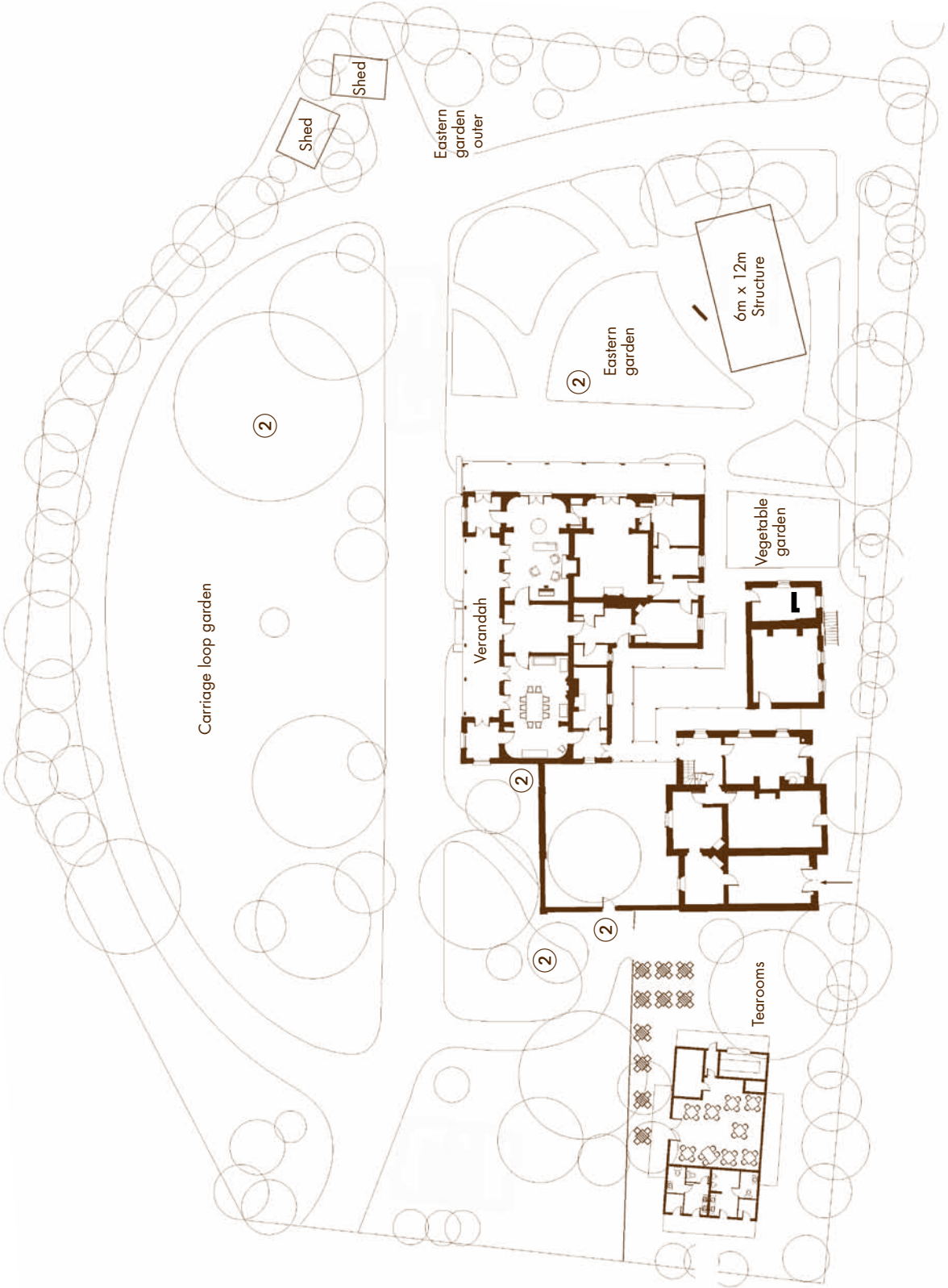
For more information regarding Elizabeth Farm, or other HHT venues please contact:

**Sales & Marketing Coordinator | HHT venues | Historic Houses Trust**

The Mint, 10 Macquarie Street, Sydney, NSW 2000

**T** +61 2 8239 2288 | **F** +61 2 8239 2400 | **E** [venues@hht.net.au](mailto:venues@hht.net.au) | [www.hhtvenues.com.au](http://www.hhtvenues.com.au)

SITE PLAN



- ① 3 phase power
- ② 240v power
- ③ Height restriction 2.1m